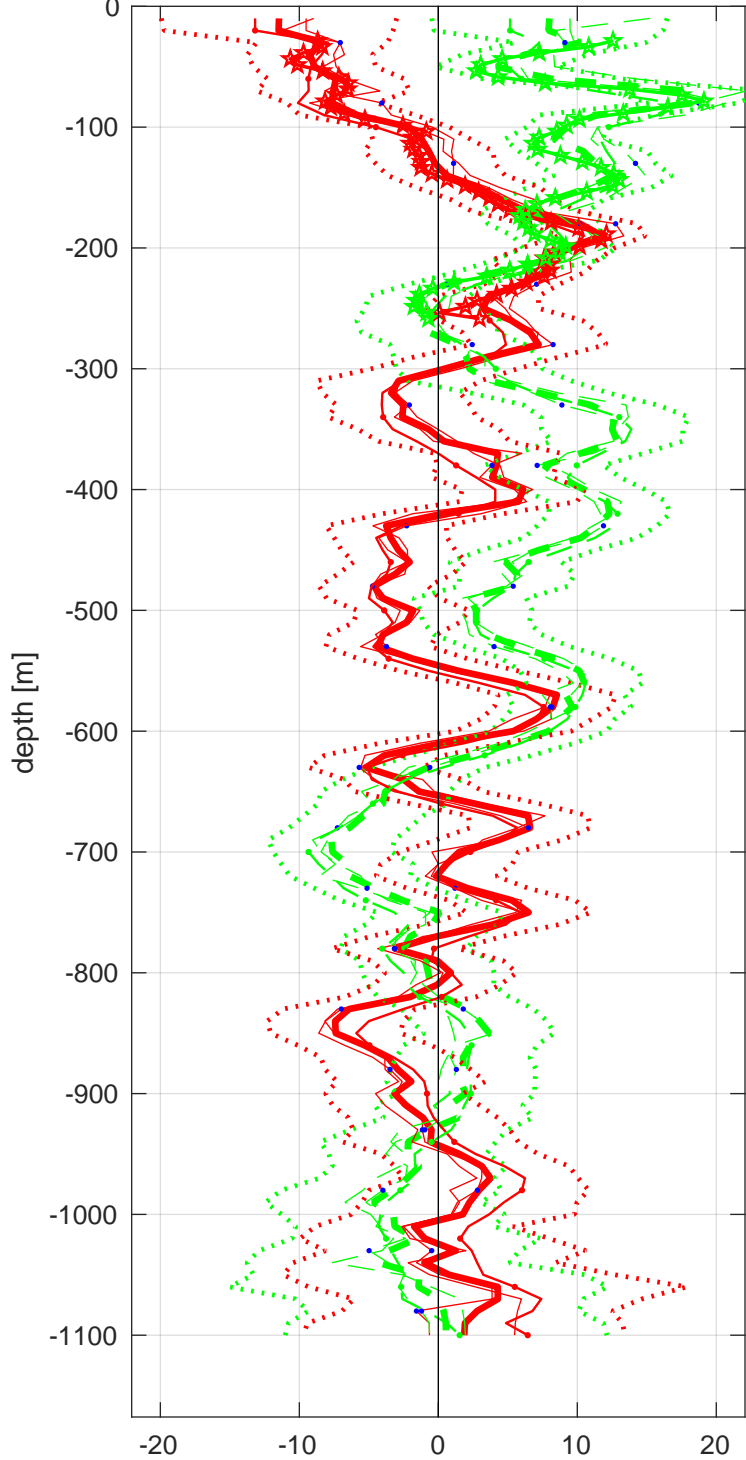


Station : P2E station #10101 (V7) Figure 1

U(-) V(--); blue dots down cast; dotted shear; pentagon SADCP



Start: 29°N 59.9844' 170°W 26.6688'

03-Jun-2022 10:18:31

End: 29°N 59.9844' 170°W 26.6676'

03-Jun-2022 11:04:59

u-mean: 0 [cm/s] v-mean 4 [cm/s]

binsize do: 10 [m] binsize up: 10 [m]

mag. deviation 8.3

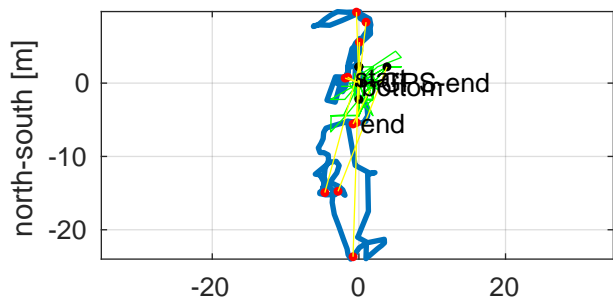
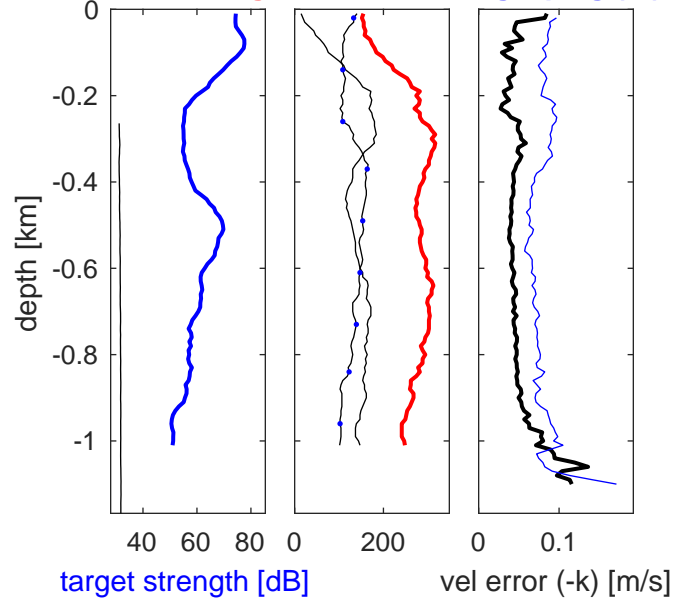
wdiff: 0.2 pglim: 0 elim 0.5

bar:1.0 bot:1.0 sad:1.0

weightmin 0.1 weightpower: 1.0

max depth: 1002 [m]

range of instrument ping (-b)



CTD-position (blue) and ship (green) east-west [m]